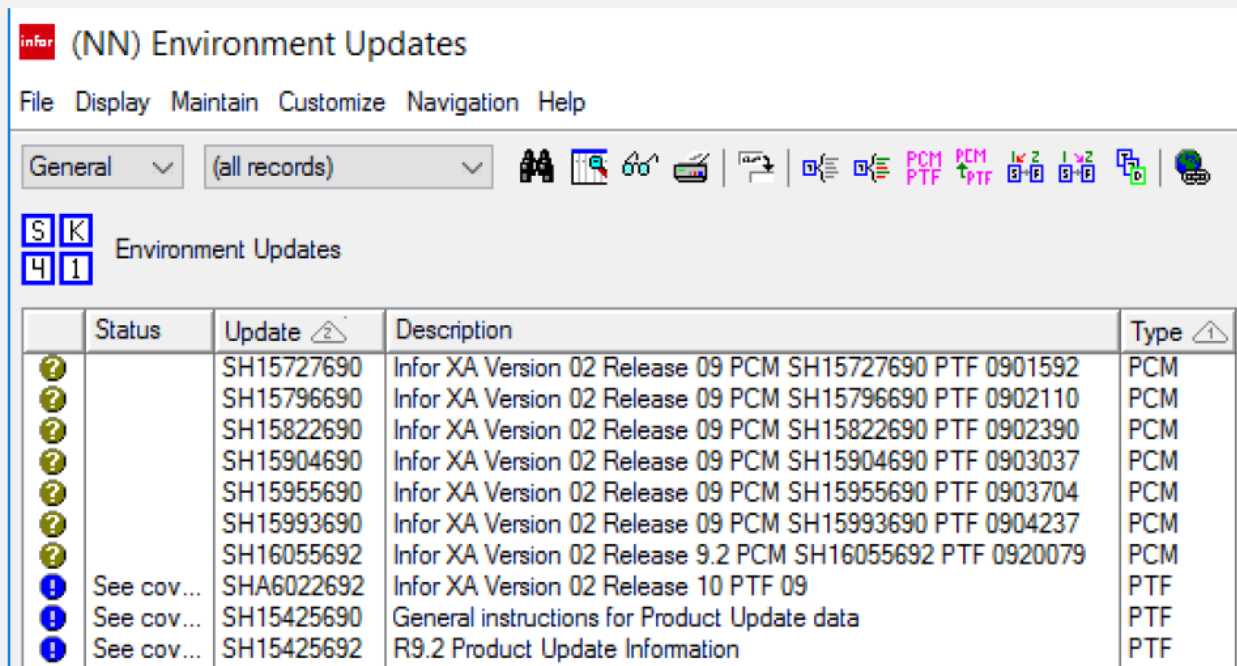


## Using PUI to Perfect XA Environments – Part 2

*This is the second in a three-part series of articles about Infor XA's PUI tool. In the first article, we learned how to set up PUI on the iSeries. In this article, we will look at the steps to take to perform a PUI Analysis.*

After you have finished loading PUI into your XA Environment, you are ready to perform a PUI Analysis. In the previous article, we had discussed that it is best to have the PUI Database for the current and previous versions of XA loaded together, such as seen in the screen shot below.



The screenshot shows the Infor PUI tool interface. At the top, there is a title bar with the Infor logo and the text '(NN) Environment Updates'. Below the title bar is a menu bar with 'File', 'Display', 'Maintain', 'Customize', 'Navigation', and 'Help'. A toolbar contains various icons for file operations and analysis. Below the toolbar, there are two buttons labeled 'S' and 'K' above two buttons labeled '4' and '1'. The main area displays a table of environment updates.

Status	Update	Description	Type
?	SH15727690	Infor XA Version 02 Release 09 PCM SH15727690 PTF 0901592	PCM
?	SH15796690	Infor XA Version 02 Release 09 PCM SH15796690 PTF 0902110	PCM
?	SH15822690	Infor XA Version 02 Release 09 PCM SH15822690 PTF 0902390	PCM
?	SH15904690	Infor XA Version 02 Release 09 PCM SH15904690 PTF 0903037	PCM
?	SH15955690	Infor XA Version 02 Release 09 PCM SH15955690 PTF 0903704	PCM
?	SH15993690	Infor XA Version 02 Release 09 PCM SH15993690 PTF 0904237	PCM
?	SH16055692	Infor XA Version 02 Release 9.2 PCM SH16055692 PTF 0920079	PCM
!	See cov... SHA6022692	Infor XA Version 02 Release 10 PTF 09	PTF
!	See cov... SH15425690	General instructions for Product Update data	PTF
!	See cov... SH15425692	R9.2 Product Update Information	PTF

You will notice that PCMs come first in the list, which is convenient, since perfecting your XA Environment focuses on these PCMs. Note that PUI was designed to analyze a specific PCM or PTF to ensure that all objects updated by that fix are at the correct PTF Level. PUI will also report on any missing pre-requisites associated with that PCM or PTF.

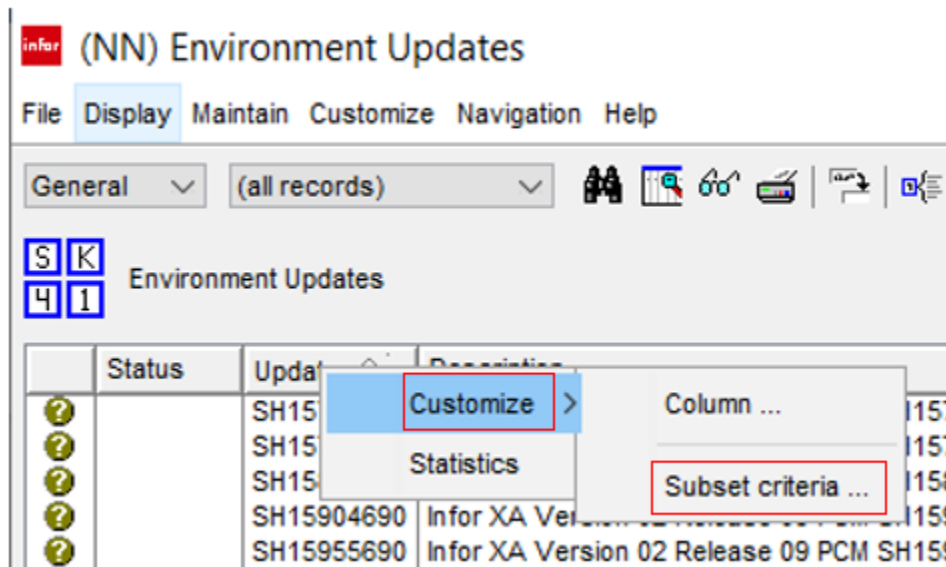
XA is constructed like a layer cake. You start by putting on a Base, and then you stack PCMs on top of that Base until your XA Environment is at the desired PCM Level. More recently, Infor has begun releasing large PTF Bundles for higher levels of XA. As of this writing, the PCMs and PTFs in the following table make up the structure of an XA Environment. The Base level is not included in the table, as it is not available for PUI Analysis.

Release	PCM Level	PCM/PTF
9.0.0.1	1592	SH15727.690
9.0.0.2	2110	SH15796.690
9.1.0.0	2390	SH15822.690
9.1.0.1	3037	SH15904.690
9.1.1.0	3704	SH15955.690
9.1.2.0	4237	SH15993.690
9.2.0.0	20079	SH16055.692
9.2.1.0	21312	SH16132.692 and SH16133.692
9.2.1.1	22032	SH16159.692
9.2.1.2	22450	SH16166.692

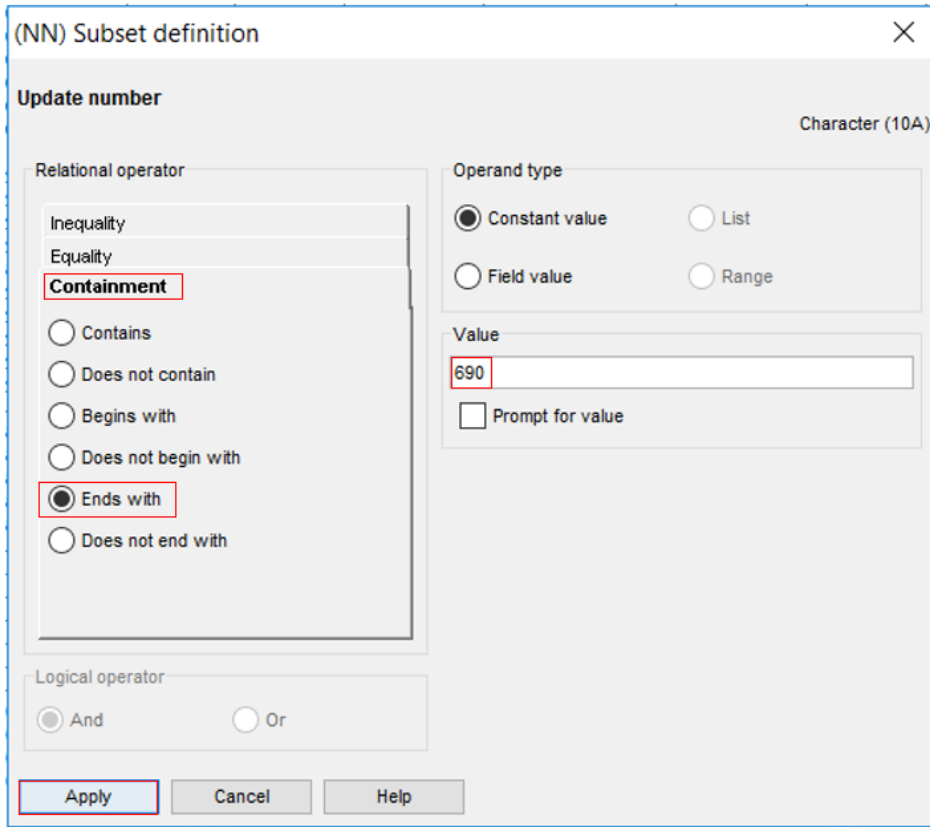
In order to perfect an XA Environment, you will need to do a PUI Analysis on each of these PCMs or PTFs. If you will look back at the prior screen shot of the PUI object, you will see that the PCMs up to 20079 are right at the top of the list.

As I mentioned earlier, PUI looks at pre-requisite PTFs for each PCM and PTF to make sure they have all been applied. For this reason, we cannot just analyze the PCMs and PTFs shown in the table above. We must analyze all PCMs and PTFs for 9.1 (690) and 9.2 (692).

We will start by analyzing everything for 9.1 (690) first. I commonly refer to this process as 'Analyze All'. To do this, start out by subsetting the list in PUI to only include PCMs and PTFs that end with 690. Position your cursor on the title of the 'Updates' column and right click. The menu shown below will pop up. Click 'Customize', and then 'Subset Criteria'.



A window will pop up that will allow you to specify the subset criteria. Start out by clicking on 'Containment' on the left, which will display the window as shown below. Click on 'Ends With' on the left, and then type in '690' in the 'Value' box on the right. Click the 'Apply' button.



Now only PCMs and PTFs ending with 690 will be displayed in the list.

**infor (NN) Environment Updates**

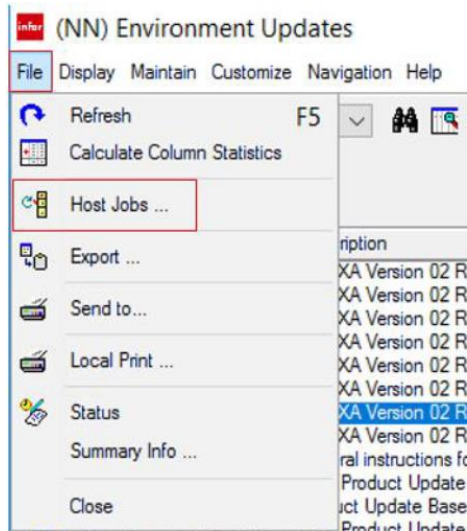
File Display Maintain Customize Navigation Help

General (temporary) - Updat...

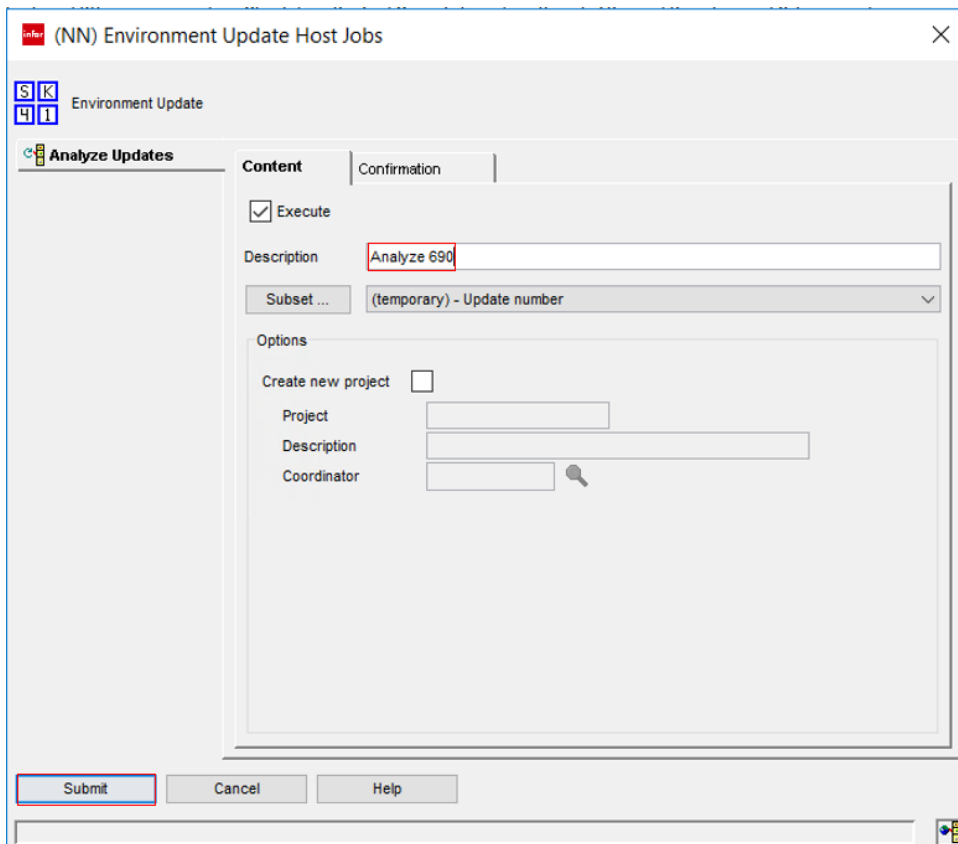
Environment Updates

Status	Update	Description	Type
?	SH15727690	Infor XA Version 02 Release 09 PCM SH15727690 PTF 0901592	PCM
?	SH15796690	Infor XA Version 02 Release 09 PCM SH15796690 PTF 0902110	PCM
?	SH15822690	Infor XA Version 02 Release 09 PCM SH15822690 PTF 0902390	PCM
?	SH15904690	Infor XA Version 02 Release 09 PCM SH15904690 PTF 0903037	PCM
?	SH15955690	Infor XA Version 02 Release 09 PCM SH15955690 PTF 0903704	PCM
?	SH15993690	Infor XA Version 02 Release 09 PCM SH15993690 PTF 0904237	PCM
!	See cov... SH15425690	General instructions for Product Update data	PTF
!	See cov... SH15426690	Product Update Base (initial) data	PTF
!	See cov... SH15429690	Product Update Current data	PTF
!	See cov... SH15726690	Prerequisite PTF for the 01592 PCM (SH15727)	PTF
?	SH15794690	Programs and Files for Database updates - prereq for SH15796	PTF

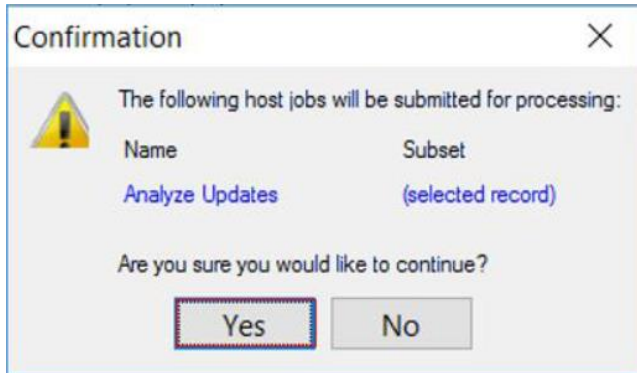
To start the PUI Analysis, click on 'File' and 'Host Jobs' at the top left of the screen.



The following window will pop up. Type in a description of the job in the 'Description' field, and then click the 'Submit' button.



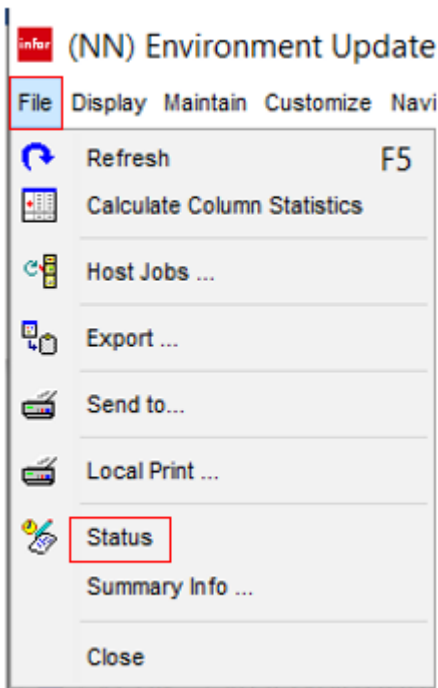
A Confirmation Window will appear. Click 'Yes' to complete the job submission.



The Host Job will run on the iSeries in QBATCH. Depending on your system, the job may take quite a while to run. Plan on 45 minutes as an average, but this may be different based on your particular machine. Before running the job, consider if your QBATCH subsystem is single-threaded, as the PUI job could block other jobs from running. Also, be aware that the PUI job will typically reflect a high CPU % while it is running. This is normal and should not be a cause for alarm.

```
Work with Active Jobs PWR8ISE
05/15/18 15:00:58 CDT
CPU %: .0 Elapsed time: 00:00:00 Active jobs: 650
Type options, press Enter.
 2=Change 3=Hold 4=End 5=Work with 6=Release 7=Display message
 8=Work with spooled files 13=Disconnect ...
Current
Opt Subsystem/Job User Type CPU % Function Status
--- EVNTRouter QSYS SBS .0 DEQW
--- EVNTRouter AMAPICS ASJ .0 DEQW
--- QBATCH QSYS SBS .0 DEQW
--- AMN0001871 QSECOFR BCH .0 RUN
--- IFMEFFUPD AMAPICS BCH .0 DLY-00:10:00 DLYW
```

You may monitor the job in WRKACTJOB (Work with Active Jobs), as shown above, or you may monitor it in Powerlink via 'File', 'Status' on the menu.



When the 'Status' field changes to \*COMPLETE, the PUI Analysis has finished. Now, repeat the entire process for all PCMs and PTFs for 9.2 (692).

(NN) Transaction details - QSECOFR Security Officer

File Display Maintain Customize Navigation Help

General | \*(all records) | [Icons]

QSECOFR Security Officer

Date	Time	Status	Completion status	Transaction description	Transaction key data
06/28/2019	11:39:34 AM	*INPROCESS		Environment Analyze Updates	Analyze 690
06/28/2019	12:00:45 AM	*COMPLETE		Item Revision Control	MKE
06/27/2019	12:02:48 AM	*COMPLETE		Item Revision Control	MKE

After you have finished running both PUI Analysis jobs, either close and then re-open the 'All Updates' object or redisplay 'All Records' using the subset box at the top of the screen. Press F5 to refresh the screen. You should now see that the icons and 'Status' field on the left side of the screen have been updated.

	Status	Update	Description
	Partially ...	SH15727690	Infor XA Version 02 Release 09 PCM SH15727690 PTF 0901592
	Applied	SH15796690	Infor XA Version 02 Release 09 PCM SH15796690 PTF 0902110
	Partially ...	SH15822690	Infor XA Version 02 Release 09 PCM SH15822690 PTF 0902390
	Applied	SH15904690	Infor XA Version 02 Release 09 PCM SH15904690 PTF 0903037
	Partially ...	SH15955690	Infor XA Version 02 Release 09 PCM SH15955690 PTF 0903704
	Applied	SH15993690	Infor XA Version 02 Release 09 PCM SH15993690 PTF 0904237
	Partially ...	SH16055692	Infor XA Version 02 Release 9.2 PCM SH16055692 PTF 0920079
	See cov...	SHA60226...	Infor XA Version 02 Release 10 PTF 09
	See cov...	SH15425690	General instructions for Product Update data

You have now completed the second step in perfecting your XA Environment!

***In the third article in this series, you will learn how to review and correct the errors identified by PUI.***

**Sharon Foster is a Senior Programmer/Analyst with Information Systems Engineering, Inc.**